

# Data Sheet

## Ti6Al4V ELI Powder

15-45  $\mu\text{m}$

Imprint  Medical



EXCELLENT  
FLOWABILITY



PLASMA ATOMIZED  
POWDER



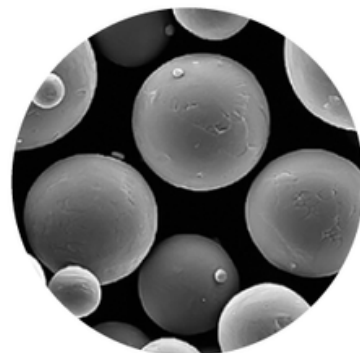
HIGH-PURITY  
MATERIAL



SPHERICAL  
MORPHOLOGY

### CHEMICAL COMPOSITION

	Al	V	Fe	O	N	C	H	Y	Ti
Min%	5.5	3.5	-	-	-	-	-	-	Bal
Max%	6.5	4.5	0.25	0.1	0.03	0.08	0.012	0.0015	Bal



### GRAIN SIZE

BY SIEVE ANALYSIS ASTM B214

Micron	+45	+53
%	<5.0	<1.0

BY LASER DIFFRACTION ASTM B822

	D10	D50	D90
Micron	23	36	50

### FLOWABILITY & DENSITY

FLOWABILITY

Hall test **ASTM B213 s/50g  $\leq 32$**

DENSITY

Tap density **ASTM B527 g/cm<sup>3</sup>  $\geq 2.8$**

Apparent density **ASTM B212 g/cm<sup>3</sup>  $\geq 2.35$**

### STANDARDS

ASTM B348-13 Grade 23  
ASTM F136-13  
ASTM F1472-14  
ASTM F1580-12  
ASTM F3001-14

### MORPHOLOGY

Spherical  
ISO 9276-06:2008

Non-contractual document. Values shown are typical values - For information only

